

STORMWATER EDUCATION

Stormwater is precipitation that does not soak into the ground, but instead runs off the surface. As stormwater flows over driveways, lawns, and sidewalk, it picks up debris, chemicals, dirt and other pollutants. Stormwater flows directly into storm sewer systems and water bodies such as lakes, streams, rivers, wetlands, or coastal waters. In most cases, whatever enters a storm sewer system is discharged untreated into the water bodies we use for swimming, fishing, and drinking water supply.

KEEP OUR STORM DRAINS CLEAR OF TRASH & DEBRIS

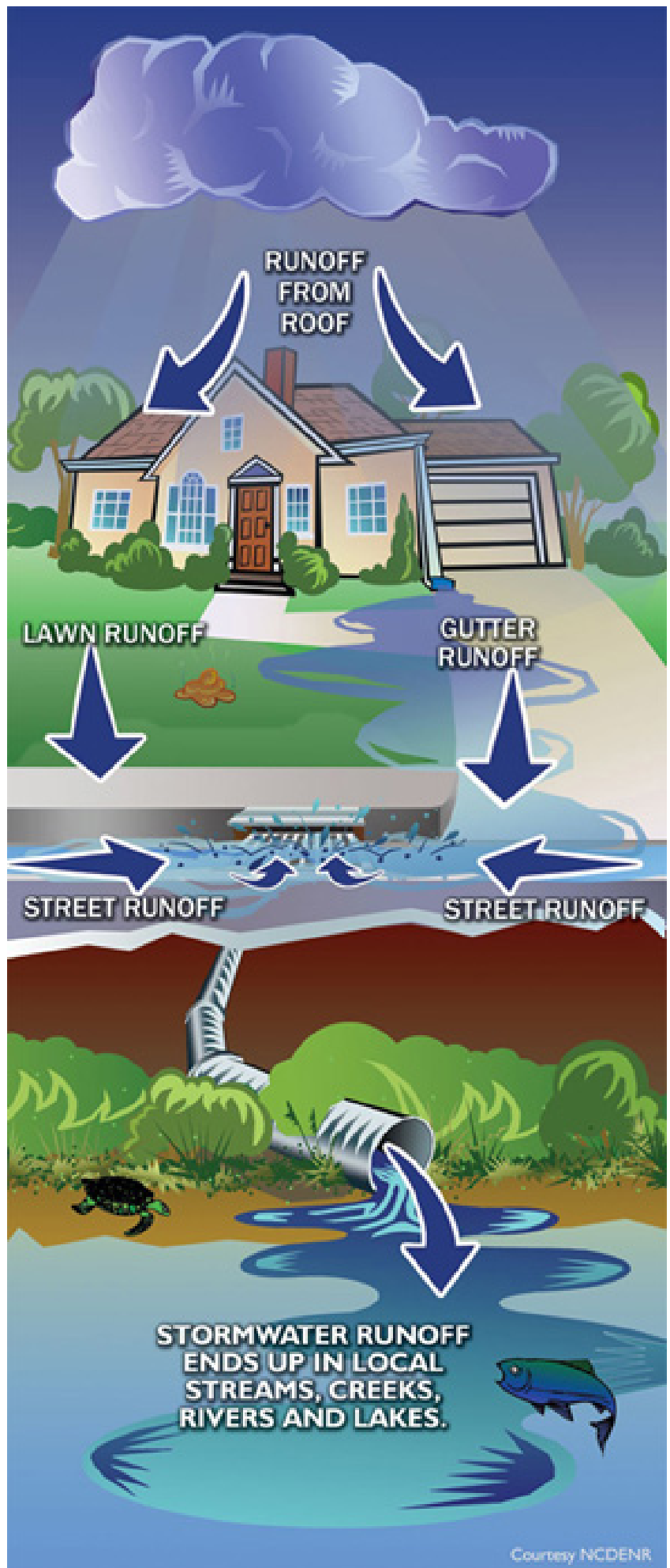
When grass clippings, leaves, or other debris are washed or dumped into our storm sewer inlets, drainage can be delayed or blocked. To prevent this, sweep up grass clippings from paved surfaces and dispose of them properly. Compost or mulch yard waste when possible. Rake leaves regularly so they remain out of the streets and gutters. Use pesticides and fertilizers sparingly so excess chemicals do not wash into the storm drain and pollute water bodies. Ensure all trash and recyclables are properly secured and disposed. Performing these standard practices will help keep the storm sewer clean from pollutants and help prevent flooding.

STORM DRAINS ARE FOR RAIN WATER ONLY

By practicing healthy household habits, homeowners can keep common pollutants off the ground and out of the storm sewer system. Clean up spilled fluids with absorbent materials and don't rinse into a nearby storm drain. Recycle used oil and other automotive fluids at service stations. When walking your pet, pick up pet waste and dispose of it properly. Whenever possible, drain your pool or spa into the sanitary sewer system. Adopt these healthy household habits and help protect our water bodies.

If you observe pollution violations:

CALL: (281) 290-6503



KEEP OUR STORM DRAINS CLEAR OF TRASH & DEBRIS

Stormwater is precipitation that does not soak into the ground, but instead runs off the surface. As stormwater flows over driveways, lawns, and sidewalks, it may pick up debris, chemicals, dirt and other pollutants. Stormwater eventually flows directly into the storm sewer systems and water bodies such as lakes, creeks, rivers, or coastal waters. In our area, whatever enters a storm sewer system is discharged **untreated** into the water bodies we use for swimming, fishing, not to mention our drinking water supply. When grass clipping, leaves, or other debris are washed or dumped into our storm sewer inlets, drainage can be delayed or blocked. Sweep up grass clippings from paved surfaces. Use pesticides and fertilizers sparingly so excess chemicals do not wash into the storm drain and pollute water bodies. Additionally, garbage, motor oil, paints, antifreeze, and pet waste, are **NOT** allowed in storm sewers. All these items are considered illegal dumping or illicit discharges and the person doing this may be subject to penalties or fines if legal action is taken.



STORM DRAINS ARE FOR RAIN WATER ONLY

By practicing healthy household habits, homeowners can keep common pollutants off the ground and out of the storm sewer system. Clean up spilled fluids with absorbent materials and don't rinse into a nearby storm drain. Recycle used oil and other automotive fluids at service stations. When walking your pet, pick up pet waste and dispose of it properly. Whenever possible, drain your pool or spa into the sanitary sewer system. Adopt these healthy household habits and help protect our water bodies.

If you observe illegal dumping within the District please call: (281) 290-6503